

26 March 2021

Our Ref: LTA/CP(SW)/C37.040.000/0000058

Your Ref:

DID: 6396 1248 Fax: 6396 1193

Dear Owner/Occupier,

**Opening of new city-bound Upper Bukit Timah Road linking Jalan Jurong Kechil and Dunearn Road, and the relocation of Bukit Timah Plaza access to Pick Up/Drop Off point**

I would like to update you that the new city-bound Upper Bukit Timah Road in front of Bukit Timah Plaza towards Dunearn Road will be opened to traffic at 6am on **2 April 2021**. This is part of our ER480A project to upgrade Upper Bukit Timah Road and Jalan Anak Bukit.

2 This new carriageway will provide an alternative route to Dunearn Road and Clementi Road. Motorists travelling from the Toh Tuck, Toh Yi and Bukit Batok estates via Jalan Jurong Kechil can turn right at the junction with Upper Bukit Timah Road to get to Dunearn Road, Clementi Road or the City. It will also enhance the local road network in the vicinity, especially for the estates around Jalan Jurong Kechil.

3 As Upper Bukit Timah Road would have then been upgraded into a bi-directional carriageway, the vehicular entrance of Bukit Timah Plaza leading to the Drop-Off/Pick Up point will be relocated from Upper Bukit Timah Road to Jalan Anak Bukit. This will take effect on the same day the new carriageway is opened. Please refer to **Annexes A and B** for more details of the changes to the local road network.

4 We will deploy traffic marshals on site to provide guidance to motorists. For a smooth journey experience, we advise motorists to plan their journey in advance and to follow the direction signs displayed to get to their destinations.

5 After this new carriageway has been opened, we will still be carrying out minor road works associated with the ER480A project. We target to complete these by 3Q 2021, subject to the evolving Covid-19 situation. We will work closely with our contractor to minimise any inconvenience which may arise.

6 Following the opening of the city-bound Upper Bukit Timah Road, Bus Services 67, 75 and 170 which currently ply along Jalan Anak Bukit (city-bound direction) will be amended to ply Upper Bukit Timah Road on **11 April 2021 (Sunday)**. The three bus services will call at the bus stop outside Beauty World MRT Station Exit A and a new bus stop opposite Pei Hwa Presby Primary School. The bus route amendment will enhance the bus connectivity with DTL Beauty World MRT station as well as to amenities along Upper Bukit Timah Road. Commuters along Upper Bukit

Timah Road can also enjoy two-way bus connectivity options along Upper Bukit Timah Road to amenities along Clementi Road and Dunearn Road.

7 For existing commuters taking Services 67, 75 and 170 along Jalan Anak Bukit, you will not be affected when travelling to Clementi Road and Dunearn Road, as you can continue to take alternative Services 66, 77, 157, 174, 852, 961/M and 970 to Dunearn Road and Services 61 and 184 to Clementi Road. If you wish to access the amended Services 67, 75 and 170 to other destinations, you can consider either walking to the new bus stop opposite Pei Hwa Presby Primary School along Upper Bukit Timah Road or make a same stop connection to the amended bus services along Clementi Road and Dunearn Road via the alternative services. Please refer to **Annexes C and D** for the details of the bus service amendments and alternative travel options.

8 If you have any queries, please contact:

**Feng Ming Construction Pte Ltd**

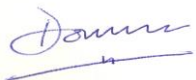
Mr Ken Loh, Public Relations Officer	Mobile: 9664 0078
Mr Chow Hue Kay, Senior Project Manager	Mobile: 9329 2020

**Land Transport Authority**

Mr Sia Wei Kai, Executive Engineer	Mobile: 9229 2805
Mr Arumugam Shashi, Engineer	Mobile: 9272 4975

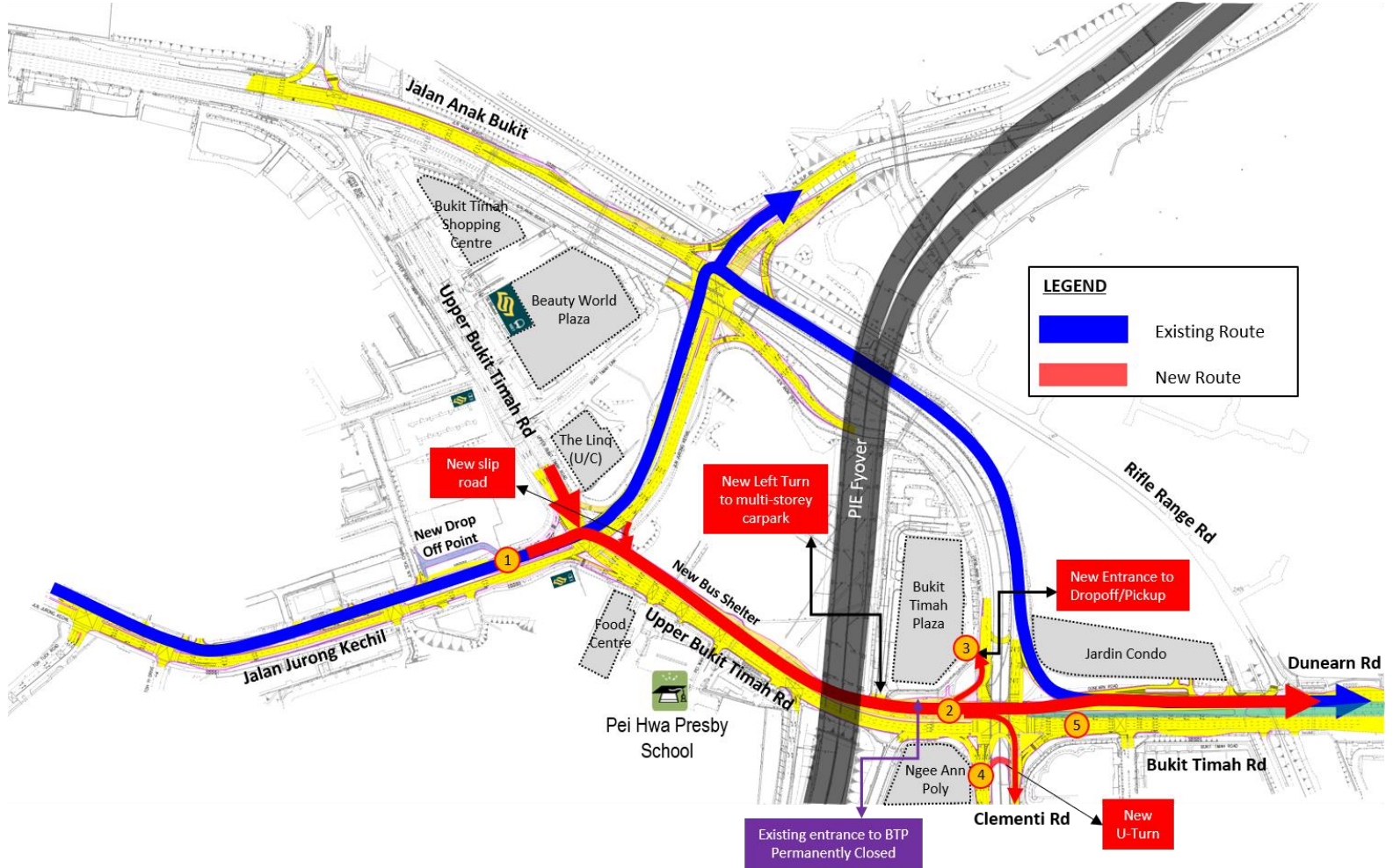
Thank you, and we look forward to your continued support of our ER480A Project.

Yours sincerely,



Dominic Tay  
Community Partnership, QSC2 Group  
Land Transport Authority

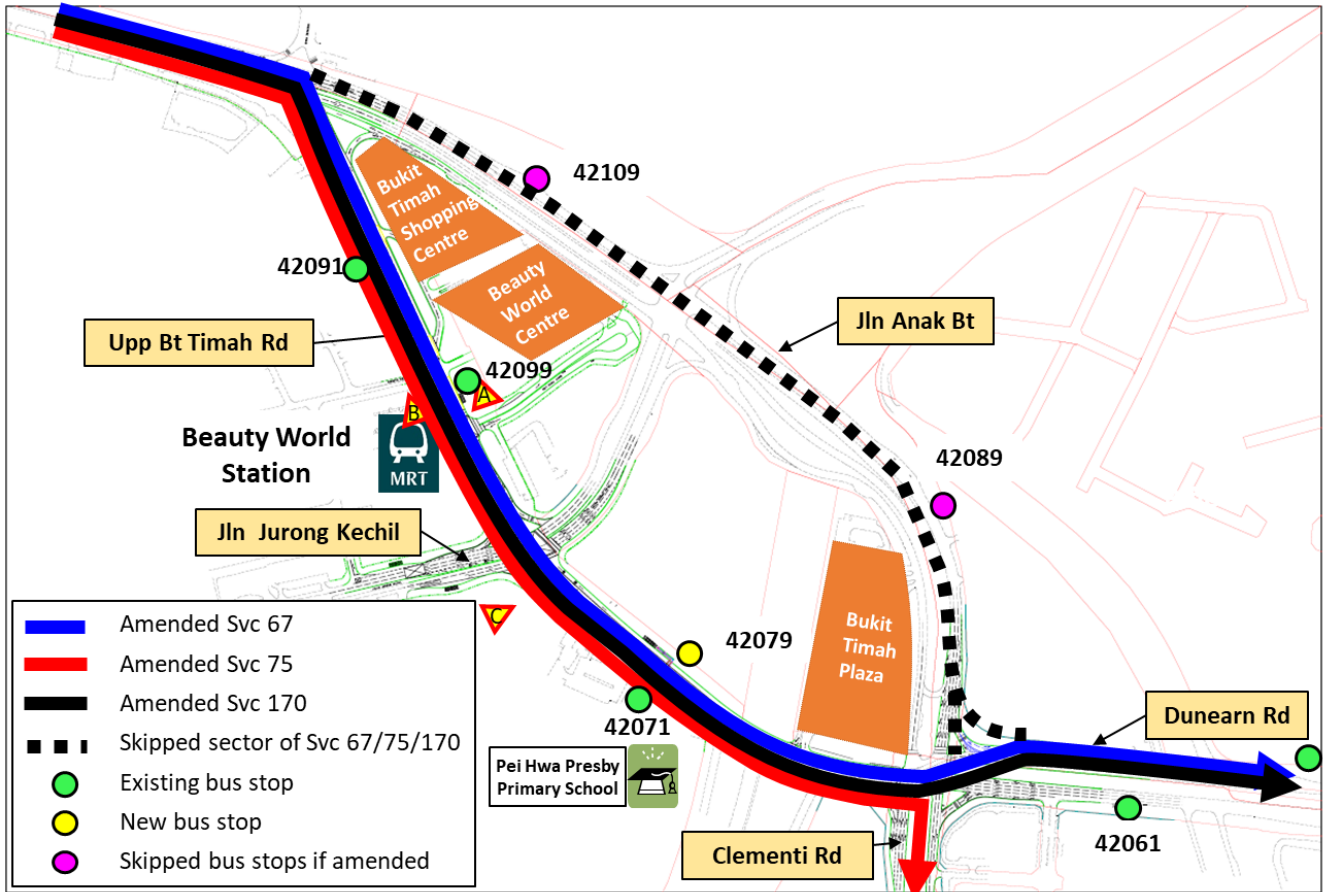
**Changes to local road network**



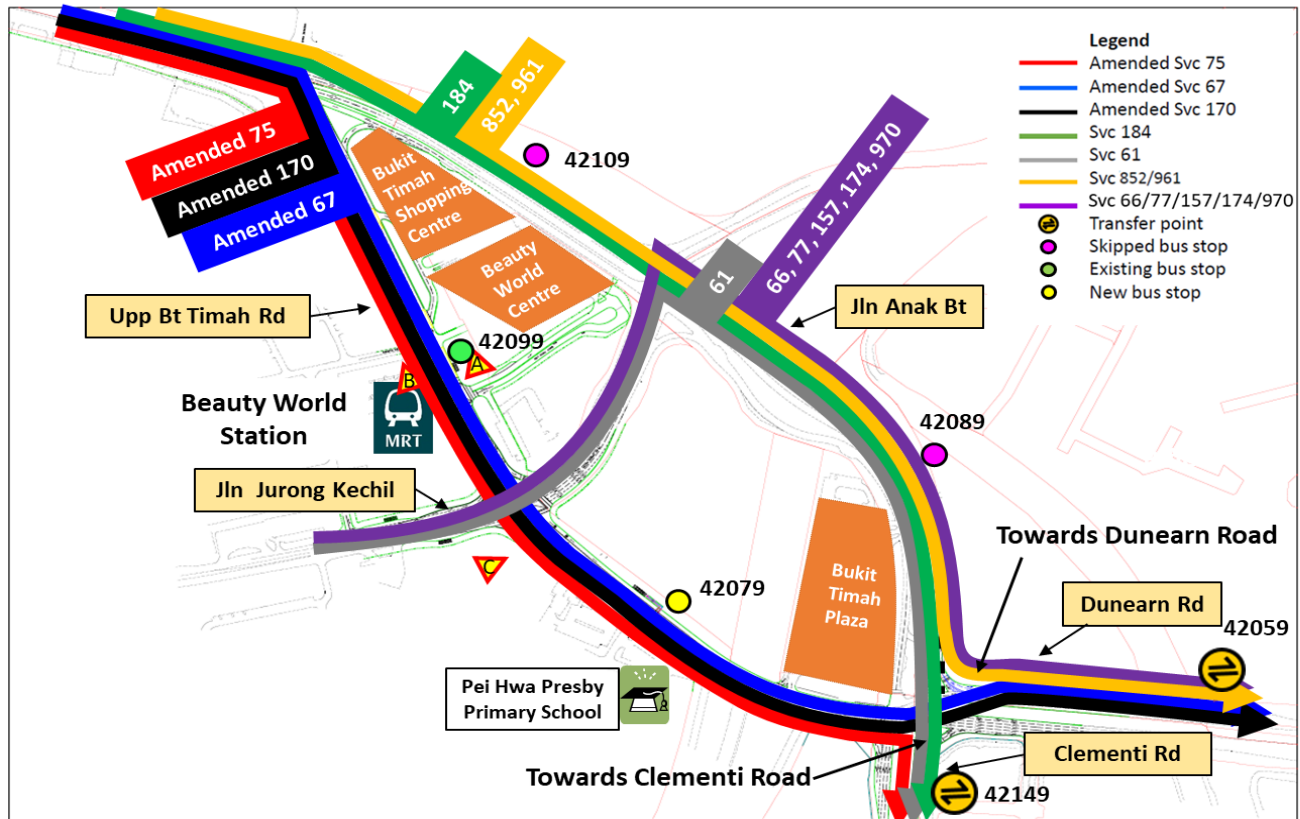
**New routes**

From	To	New Routes
Jalan Jurong Kechil	Dunearn Road/ Clementi Road	Keep to the rightmost lane on Jalan Jurong Kechil and turn right at ① to embark on the new city bound carriageway. At ②, continue straight towards Dunearn Road, or turn right towards Clementi Road.
Upper Bukit Timah Road	Dunearn Road/ Clementi Road	Keep to the centre lane on Upper Bukit Timah Road (fronting Beauty World MRT) and continue straight to embark on the new city bound carriageway. At ②, continue straight towards Dunearn Road, or turn right towards Clementi Road.
Jalan Jurong Kechil /Upper Bukit Timah Road	Bukit Timah Plaza	At ②, turn left towards Jalan Anak Bukit and turn left to enter Bukit Timah Plaza new access (Drop-Off/Pick up) at ③
Jalan Anak Bukit/PIE	Bukit Timah Plaza	At Jalan Jurong Kechil, keep to the leftmost lane towards Jalan Jurong Kechil and turn left at the new slip road to the new city bound carriageway. At ②, turn left towards Jalan Anak Bukit and turn left to enter Bukit Timah Plaza new access (Drop-Off/Pick up) at ③
Clementi Road	Bukit Timah Plaza	At Clementi Road ④, continue straight towards Jalan Anak Bukit and turn left to enter Bukit Timah Plaza new access (Drop-Off/Pick up) at ③
Bukit Timah Road	Bukit Timah Plaza	At Bukit Timah Road ⑤, keep to the rightmost lane and turn right towards Jalan Anak Bukit. Turn left to enter Bukit Timah Plaza new access (Drop-Off/Pick up) at ③

**Bus Route Amendments of Services 67, 75 and 170**



**Alternative Travel Options**



Travel to	Alternative Travel Options
Dunearn Road	You can continue to take direct alternative Services <b>66, 77, 157, 174, 852, 961/961M</b> and <b>970</b> .
Clementi Road	You can continue to take direct alternative Services <b>61</b> and <b>184</b> .
Other destinations via Services 67, 75 and 170	You can consider either walking to the new bus stop (BS 42079) opposite Pei Hwa Presby Primary School along Upper Bukit Timah Rd or making a same-stop connection along Clementi Road (BS42149) and Dunearn Road (BS 42059) via the alternative services to access the amended Services 67, 75 and 170.